



Ref: 1152/7097
Date: Oct 2012

Manuscript Acceptance Report

Date: Nov 2012

Dear Abolfazl Abdollahi Fard
Ph.D. Art research Student faculty of art, Shahed University, Tehran, Iran

Thanks for your submission to **American Journal of Scientific Research** (Thomson Reuters ISI indexed)
We have the pleasure to inform you that your manuscript has been accepted for publication.
It will be published in Issue 85.

Title: Innovative Islamic geometric patterns inspired by nature

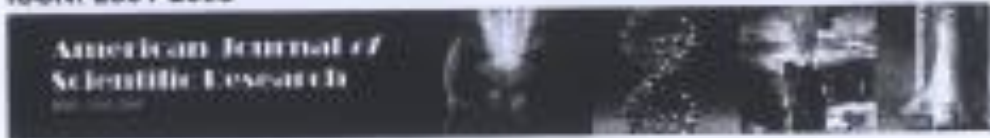
Author(s): Abolfazl Abdollahi Fard, Habibollah Ayatollahi ,Ali Asghar Shirazi

Yours sincerely,

Adrian Marcus Steinberg, PhD
Managing Editor



American Journal of Scientific Research (ISI JOURNAL)
ISSN: 2301-2005



Unit 117 Orion Mall, Palm Street, P.O. Box 825, Victoria Mahé, Seychelles
Tel: +248 400138344
Fax: +248 400138345

- Impact of Organization Culture on Promoting Green Supply Chain 5-12
Muhammad Imtiaz Subhani, Syed Akif Hasan, Muhammad Khurram Amin and Amber Osman
- Comparative Assessment of Effects of Ketoconazole, Miconazole, Clotrimazole and Fluconazole against Candidal Species Isolated from Oral Mucosa of Patients with down's Syndrome 13-21
Falahati Mehraban, Assadi Mehrdad, Bahman Soufiani Katayoun, Barzegar Gholamreza, Farahyar Shirin and Nozari Shima
- Effects of Teaching TTM on Reduction of Opium use and the Addict's Shyness in Sina Quitting Camp, Mandoab 22-32
Mehrab bashirpur, Hoseyn Salimi and Parisa Rahbari
- Marketing Mix: An Exploratory Research in Syria from an Islamic Perspective 33-52
Hussin Hejase, Bassam Hamdar, Mohammed Orfalli and Ale Hejase
- Assessment of the Impact of Ethanolic Extract of 3 Species of Native Plants (*Urtica Dioica*, *Plantago Major* and *Hypericum Perforato*) in East Azerbaijan Region on Isolated Bacteria from Urinary Tract Infections 53-60
Younes Anzabi, Milad Anvarian, Mir Naser Mousavinia, Seyed Behzad Mansouri Zangir and Vahid Khodabandehloo
- Comperative Assessment of Pre and Post-Partum Serum Values of Glucose, Beta Hydroxybutyric Acid, Calcium and BUN in Ewee 61-65
Hamed Issapour, Ali Rezaie, Mehrdad Pashazadeh, Ali Hassanpour, Vahid Elmi and Abbas Zeighami
- Fatty Liver Syndrome: Relationship with NEFA, Glucose and Copper Serum Values In Slaughtered Cows in Tebriz Abattoir-Iran 66-72
Amirperviz Rezaeisaber, Javad Khanzadeh, Farzin Akhondi, Daryoush Abdili, Farzad Noli and Hossein Dehghan
- Investigation on System Prerequisites of Business Intelligence (BI) in the Leasing Companies 73-82
Yaghub Farjami, Sina Nematizadeh and Mehdi Maleki
- Natural Stone in Jordan: Characteristics, Specifications and Importance in Interior Architecture 83-84
Raed Al-Share, Wasef Momani, Asem Obeldat and Nasser Mansour
- Unit 117 Orion Mall, Palm Street, P.O. Box 828, Victoria Mahé, Seychelles
Tel: +248 400138344
Fax: +248 400138345

Interaction of Some Environmental Quality Concepts Masoud Tarantash and Nabiollah Kolbadi	95-103
Relationship between Job Rotation and Organizational Indifference in Incorporated Governmental Organizations in City of Kerman, Iran Ardashir Shiri, Mehdi Deghani and Moslem Mohammadian	104-112
Designing and Validating a Comprehensive Scale of English Language Teachers' Attributes and Establishing its Relationship with Achievement Ebrahim Khodadady, Zohre Ghaffasi Fakhrabadi and Hoda Kanan Azar	113-125
Relation between Financial Flexibility and Choosing a Depreciation Method in the Accepted Firms in Stock Exchange; Case study: The Firms Accepted in Tehran Stock Exchange (2006-2009) Mahmoud Reza Rakhshani, Hadi Keykha, Marziyeh Rakhshani and Hadi Jafari Rokni	126-135
Innovative Islamic Geometric Patterns Inspired by Nature Abolfazl Abdollahi Fard, Habibollah Ayatollahi and Ali Asghar Shirazi	136-149
Study the Relationship between Life Skills and Behavioral Variables in Students (Keraj City) Maryam Jafari Manesh and Shahin Abdol Maleki	150-156

Innovative Islamic Geometric Patterns Inspired by Nature

Abolfazl Abdollahi Fard

*Corresponding Author, Ph.D. Art Research Student Faculty of Art
Shahed University, Tehran, Iran
Tel: 09143135351
E-mail: abolfazlsabdollahie@yahoo.com*

Habibollah Ayatollahi

Associate Professor, Faculty of Art, Shahed University, Tehran, Iran

Ali Asghar Shirazi

Assistant Professor, Faculty of Art, Shahed University, Tehran, Iran

Abstract

The secrets of nature from aesthetic point of view are in its complicated geometric order. In the Islamic art innovative geometric motifs have been created by the artists avoiding blindly imitation of the nature as invention of such artworks requires understanding of mathematics. In contrary, negligence is realized in evolution of Islamic geometric patterns and therefore presenting innovative designs is considered as a serious issue. Then, identification of the geometric orders in the natural elements and inspection of the Islamic geometric patterns to access new geometric designs in the Islamic art with emphasis on the applied aspects are objective of this research. Configuration of animals and flowers has been studied in this research through a descriptive and analytical approach with abstraction of their realistic features. The results reveal that presenting new Islamic designs regarding hidden geometry in the natural elements using available technology is possible. In addition, the presented animal and floral abstracted motifs are functional in decorative art, such as architecture, handicrafts and cloth.

Keywords: Islamic Art, Islamic Geometric Patterns, Nature, Abstraction, Geometric Order.

Introduction

Human being has always admired the beauty of nature and considered it as the eternal source for creating the artwork. The Islamic art has avoided the blind and mere imitation despite praising the nature, and the Islamic artists had found that the secrets of nature beauty have lied in the complex system inside it. As Keith Critchlow one of the prominent orientalist also believes that the complex patterns of Islamic art are similar to the structure of inside the elements of nature. Along with understanding the secrets of nature, achieving its summary or abstract form artist is also important because the artist designs are creates these motifs by it and creating these works is as the result of artist's different understanding of nature. Therefore, the artist's world is beyond the nature in its today meaning. It can be stated that the secret of survival of every masterpieces in artistic eras represents the creator's abilities in deep knowledge and understanding of mysteries of nature and world inside him.

